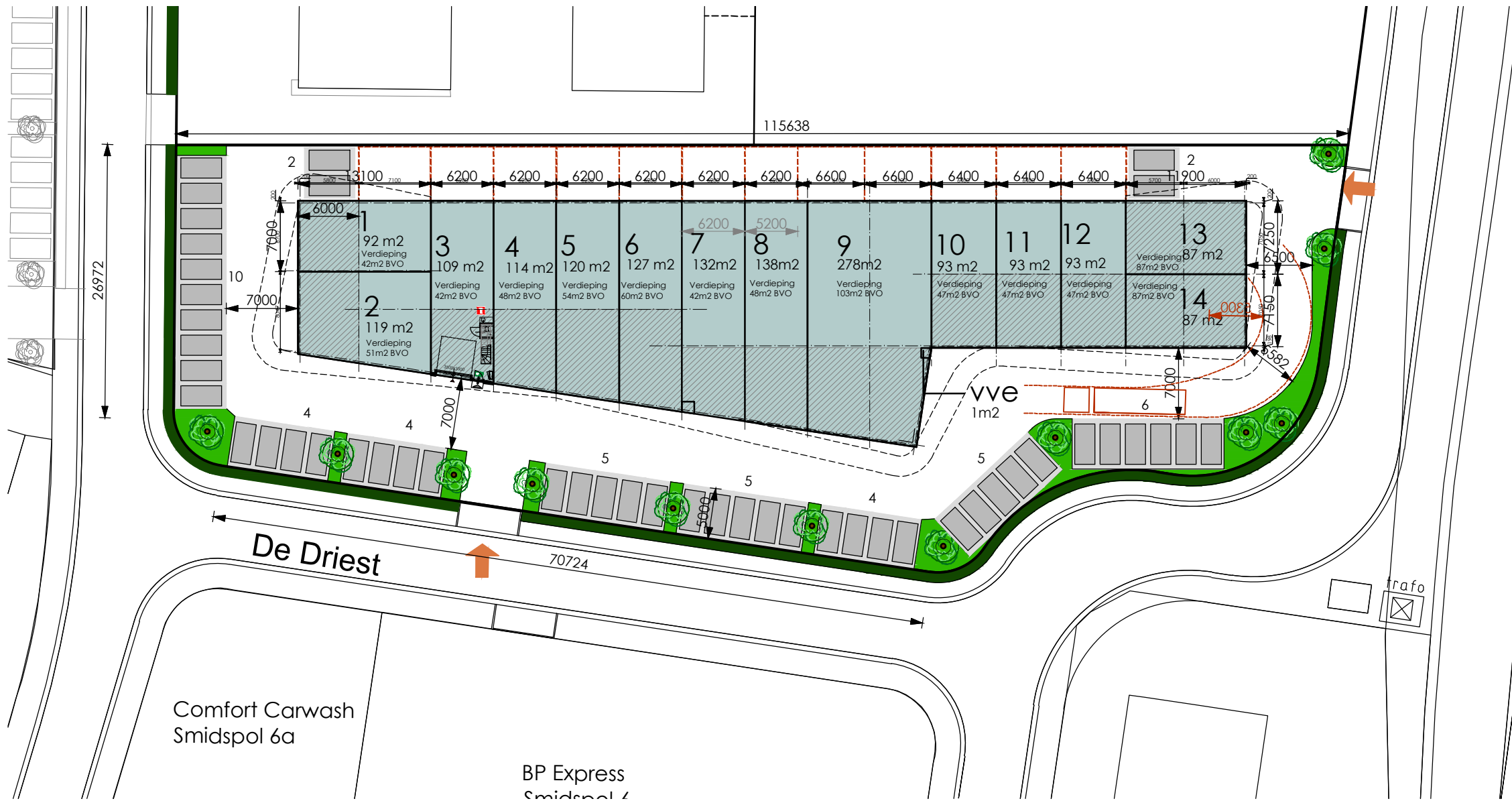




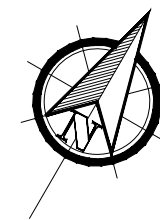
Bedrijfsverzamelgebouw "De Smit 3"

te Nijkerk



 verdieping 805 m²

parkeernorm bedrijfsgebouw : 1,8 per 100 m² BVO
 aanwezig 1683+805=2488
 --> eis: 44,8 pp
 aanwezig 47 parkeerplaatsen --> voldoet

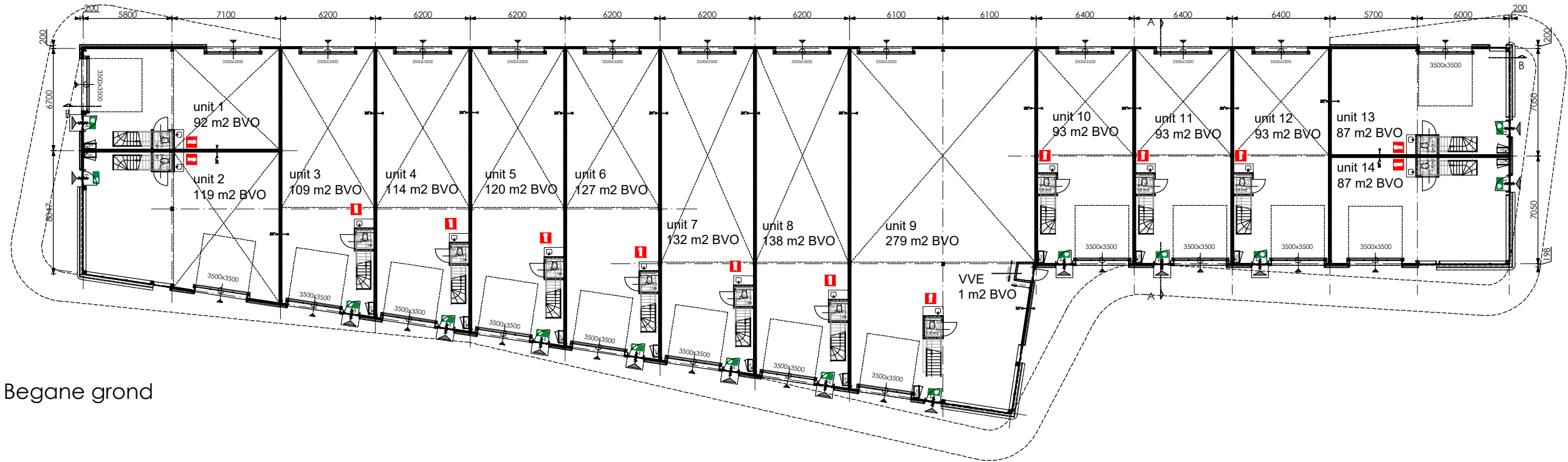


KADASTRALE GEGEVENS:

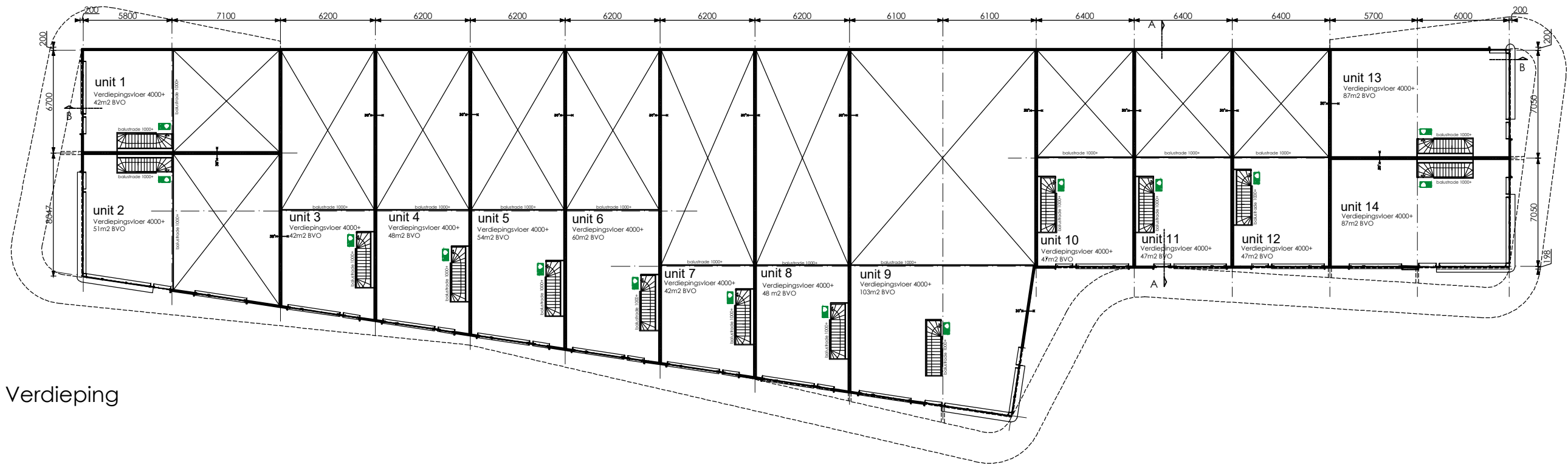
Gemeente	Nijkerk
Sectie	C
Nummer	3503

Situatietekening

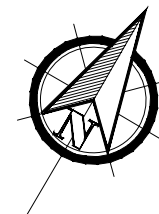
schaal 1:500
 formaat A3



Begane grond

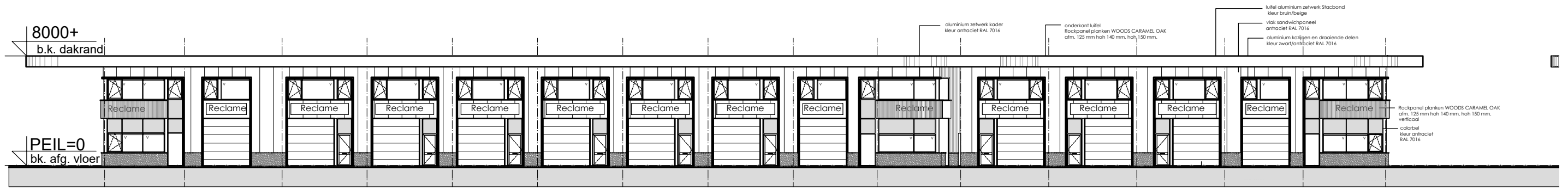


Verdieping

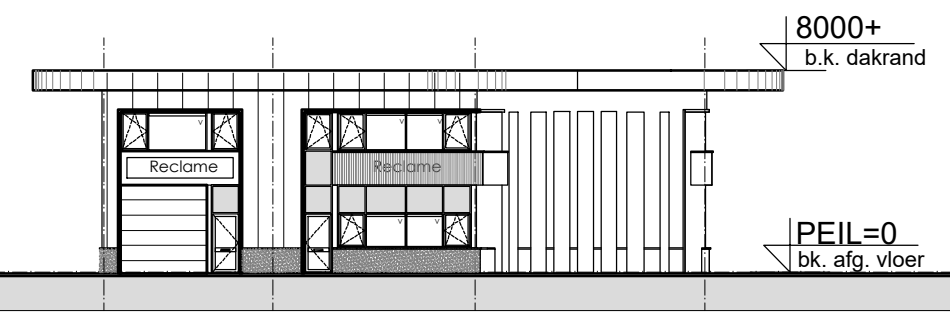
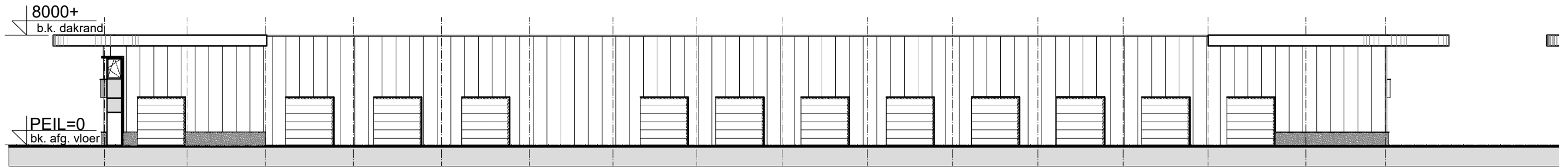


Plattegronden

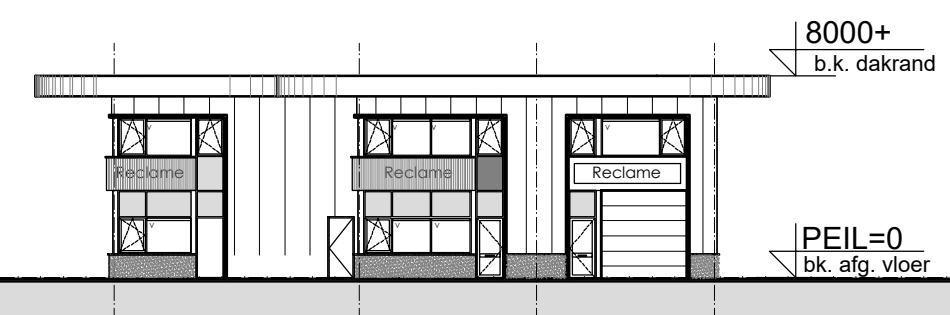
schaal 1:300
formaat A3



Voorgevel



Linker zijgevel

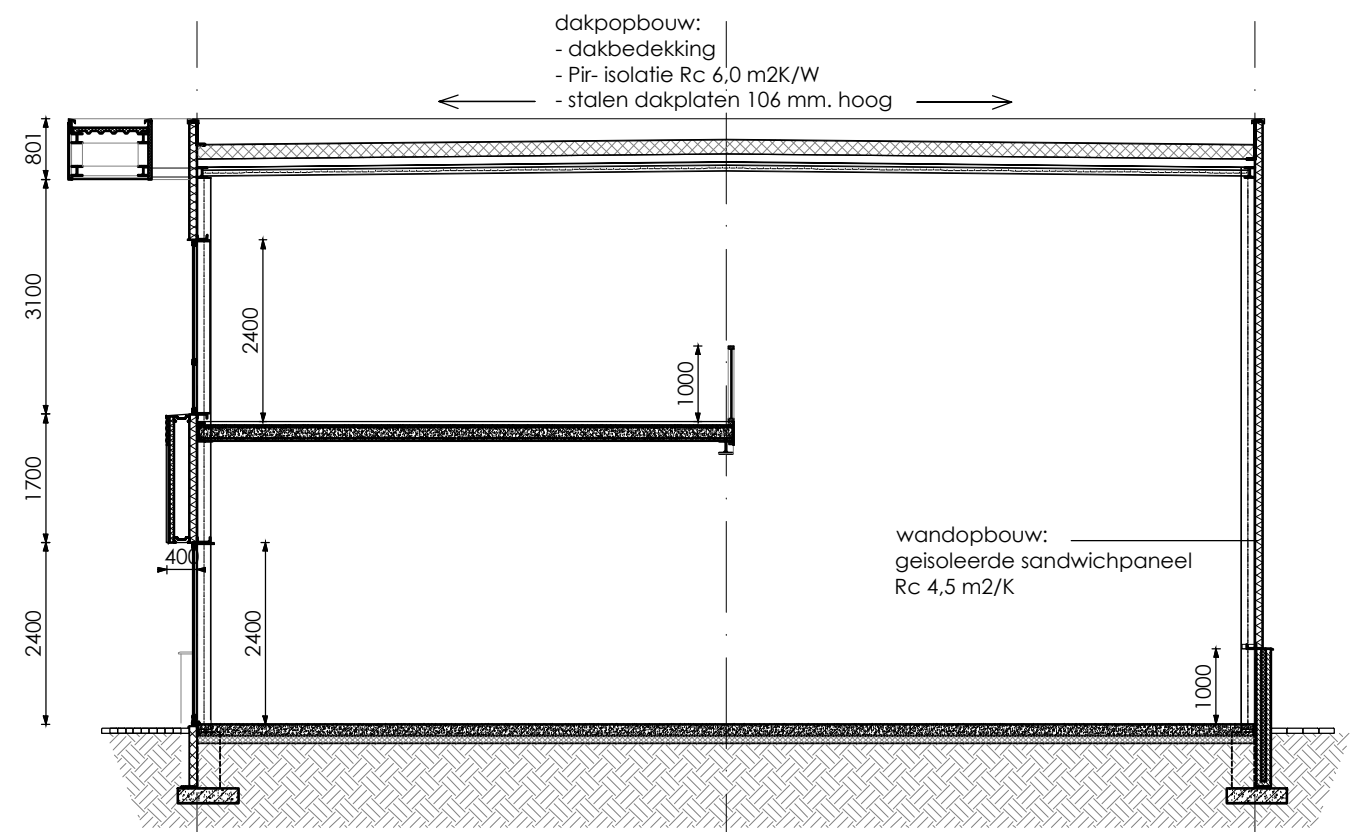


rechter zijgevel

8000+
b.k. dakrand

4000+
bk. afg. vloer

PEIL=0
bk. afg. vloer



Doorsnede A-A

Gevels en Doorsnede

schaal 1:300 / 1:100
formaat A3



Visualisaties I



Visualisaties II



Visualisaties III



Visualisaties IV

formaat A3